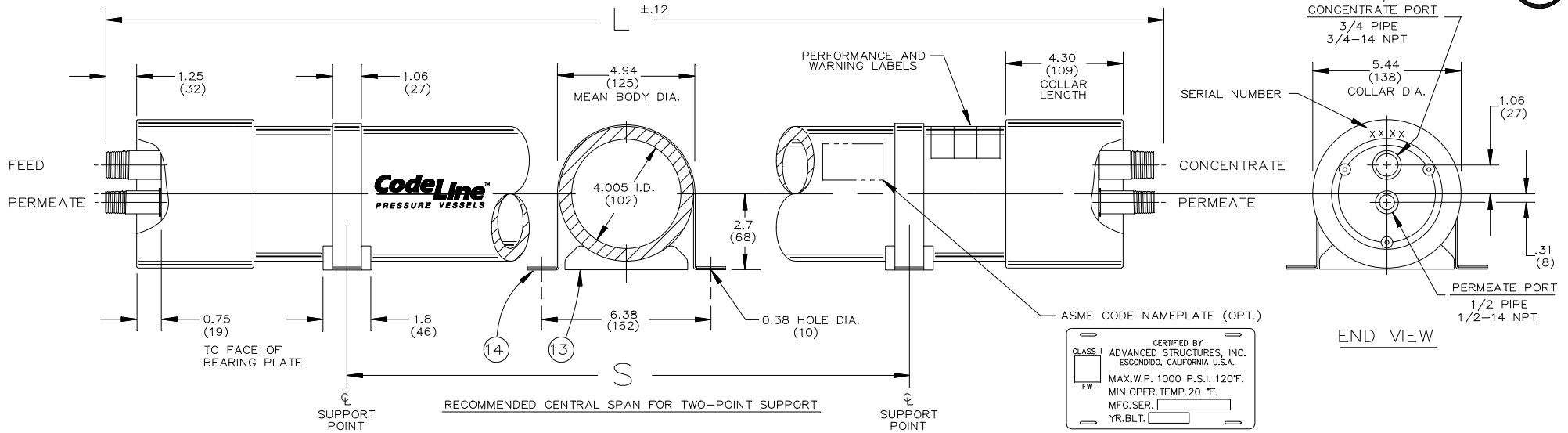
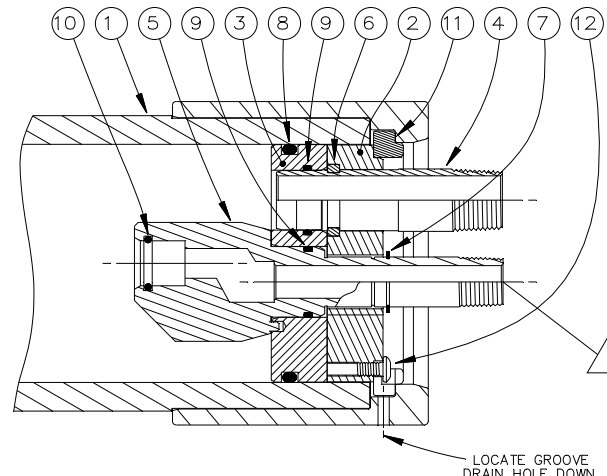


1000
PSI



Dwg. Ref.	Qty. Per	Part Number	Part Name	Materials/Remarks
SHELL				
①	1	1040XX-	Shell Length	Filament wound epoxy/glass composite with head locking groove formed by adhesive-bonded 6061-T6 hd. anod. Al. alloy collar
END PLUG ASSY				
②	2	404001-3	Bearing Plate	6061-T6 hard anodized Al. alloy
③	2	404002-1	Sealing Plate	PVC Thermoplastic
④	2	404003-2	Feed/Conc Port	Superaustenitic stainless steel - 6% moly.
⑤	2	204007-1	Permeate Port	PVC Thermoplastic
⑥	2	404008-1	Port Retainer Set	Type 316 SST-2 identical pieces per set
⑦	2	6CR001-87	Retaining Ring	Ph 15-7 Mo SST
⑧	2	6ER001-342	Plug Seal	Ethylene propylene O-Ring
⑨	4	6ER001-120	Port Seal	Ethylene propylene O-Ring
⑩	2	6ER001-116	PWT Seal	Ethylene propylene O-Ring
END PLUG INTERLOCK				
⑪	2	404007-1	Plate Retainer Set	6061-T6 hd. anod. - 3 distinct pieces/set
⑫	6	1CF005-1	Buttonhead Screw	18-8 SST with thread lock patch
VESSEL SUPPORT				
⑬	2	404056-1	Saddle	Cast urethane elastomer
⑭	2	204004-3	Strap	Type 304 SST - PVC cushion
FOR REFERENCE ONLY				



SECTION THROUGH END CLOSURE

⚠ INTERNAL PORT PRESSURE MUST NOT EXCEED 125 PSI

⚠ WARNING!

• DIMENSIONS IN INCHES (MM APPROX)
 • NOT TO BE USED FOR CONSTRUCTION UNLESS CERTIFIED

Shell Length Code	L L.O.A. IN (MM)	S Span IN (MM)	Empty Weight LB (KG)
A1	51.0 (1295)	Any	30 (14)
C1	32.0 (813)	Any	18 (8)

CodeLine™
 PRESSURE VESSELS
 by
CodeLine DIVISION
 STRUCTURAL NORTH AMERICA
 Escondido, California U.S.A.

ENGR AP 04SEP97	MODEL U4S SEAWATER RO PRESSURE VESSEL (DIRECT CONNECT)				
QLTY JK 09SEP97					
MRKT DWE 06SEP97	SCALE NONE	SHEET 1 OF 1	SIZE B	NUMBER 504003	REV F

