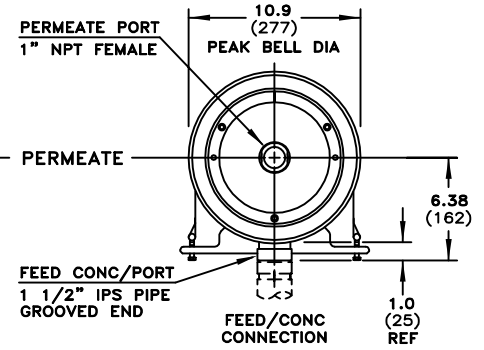
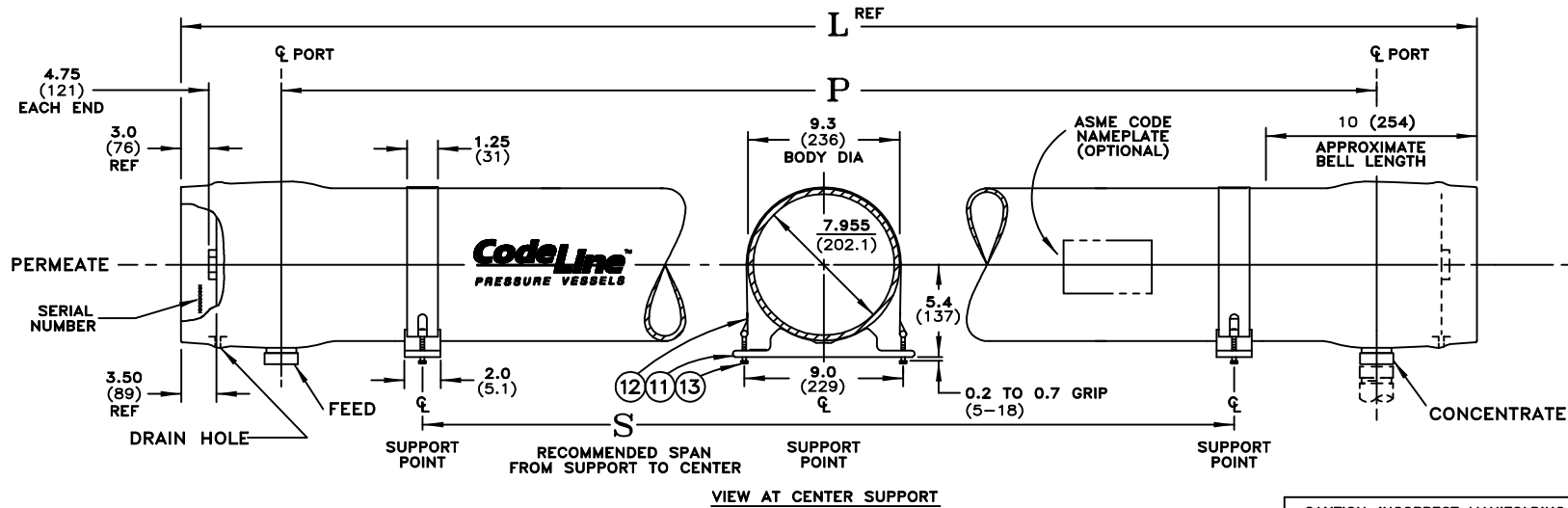


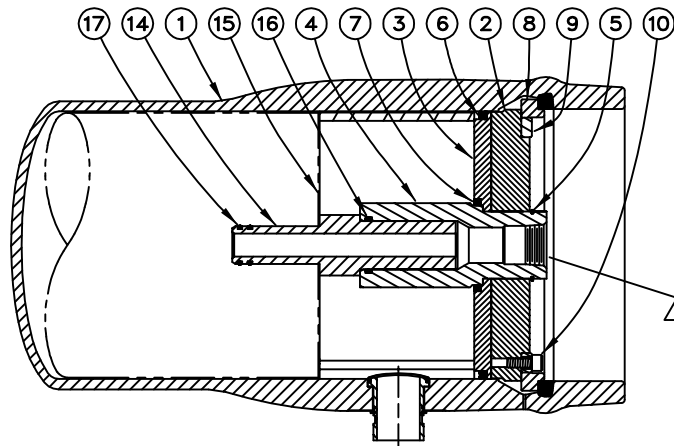
1200  
PSI  
SP



VIEW AT CENTER SUPPORT  
CENTER VESSEL ON 2 OR 3 SUPPORTS  
AT SPAN(S) "S"; 3 SUPPORTS REQUIRED  
FOR LENGTHS -4 AND OVER

CAUTION—INCORRECT MANIFOLDING  
WILL CAUSE SEVERE LOCAL STRESS  
AROUND PORT AND MAY RESULT IN  
LEAKS AND PREMATURE FAILURE;  
TAKE EVERY PRECAUTION LISTED  
ON REVERSE, SEE INSTALLATION  
INSTRUCTIONS FOR FURTHER DETAILS

Dwg. Ref.	Qty. Per	Part Number	Part Name	Materials/Remarks
<b>SHELL</b>				
①	1		Shell	Filament wound epoxy/glass composite—Head locking grooves integrally wound in-place, with Superduplex steel, (CD3MWCuN) F/C side-ports.
<b>HEAD</b>				
②	2	50686	Bearing Plate	6061-T6 aluminum alloy—hard anodized
③	2	50667	Sealing Plate	PVC Thermoplastic
④	2	50675	Permeate Port	PVC Thermoplastic
⑤	2	45248	Port Retainer	316 Stainless Steel
⑥	2	45320	Head Seal	Ethylene Propylene, Quad Ring
⑦	2	45350	Perm Port Seal	Ethylene Propylene, square-cut
<b>HEAD INTERLOCK</b>				
⑧	6	45098	Locking Ring	316 Stainless Steel
⑨	2	50676	Securing Ring	Reinforced Plastic - Yellow Color
⑩	6	45228	Securing Screws	316 Stainless Steel
<b>VESSEL SUPPORT</b>				
⑪	*3	52169	Universal Saddle	Engineering Thermoplastic
⑫	*3	45042	Strap Assy	304 Stainless Steel - PVC cushion
⑬	4	46285	Strap Screw	5/16-18 UNC, 18-8 Stainless Steel
<b>ELEMENT INTERFACE</b>				
⑭	2	As Required	Adapter	Engineering Thermoplastic
⑮	1	50734	Thrust Ring	PVC Thermoplastic, White
⑯	2	45308	Adapter Seal	Ethylene Propylene - O-Ring
⑰	A/R	As Required	PWT Seal	Ethylene Propylene - O-Ring
*2 each furnished with length code 1, 2 & 3				



SECTION THROUGH END CLOSURE  
ITEM ⑮ DOWNSTREAM ONLY

WARNING!  
INTERNAL PORT PRESSURE  
MUST NOT EXCEED 125 PSI

- NOTES**
- SHELL EXTERIOR COATED WITH WHITE, HIGH GLOSS POLYURETHANE PAINT
  - DIMENSION IN INCHES (MM APPROX.)
  - NOT TO BE USED FOR CONSTRUCTION UNLESS CERTIFIED

Shell Length Code	L	P	S	Empty Weight LB (KG)
	L.O.A. IN (MM)	Port to Port IN (MM)	Span IN (MM)	
1	60.75 (1543)	45.0 (1143)	28 X 1 (711)	125 (57)
2	100.75 (2559)	85.0 (2159)	56 X 1 (1422)	175 (79)
3	140.75 (3575)	125.0 (3175)	80 X 1 (2032)	225 (102)
4	180.75 (4591)	165.0 (4191)	64 X 2 (1626)	275 (125)
5	220.75 (5607)	205.0 (5207)	78 X 2 (1981)	325 (147)
6	260.75 (6623)	245.0 (6223)	92 X 2 (2337)	375 (170)
7	300.75 (7639)	285.0 (7239)	106 X 2 (2692)	425 (193)



DRAWN KR 22JAN08		<b>MODEL E8H/SP</b> SEAWATER RO PRESSURE VESSEL SIDEWALL PORTING			
DRAWN MD 22JAN08					
DRAWN SS 22JAN08	ECN 1698	SHEET 1 OF 2	SIZE B	NUMBER 507031	REV L

