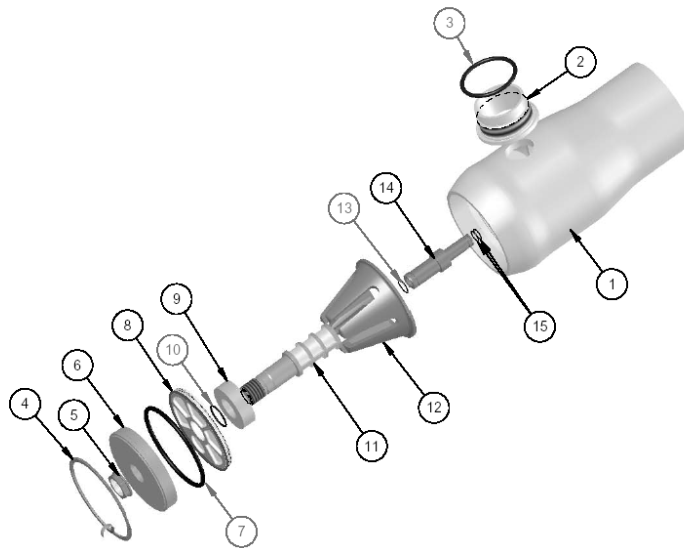


COMPONENT IDENTIFICATION 80U30, 80U45 & 80U60-Coded



DWG REF	QTY	DESCRIPTION	MATERIAL	80U30	80U45	80U60
				PART NUMBER	PART NUMBER	PART NUMBER
1	1	SHELL	Filament Wound Epoxy/Glass composites – Head Locking grooves integrally wound in place.	ORDER SECTION	ORDER SECTION	ORDER SECTION
2	A/R	F/C Port	CF3M [#]			
3	A/R	F/C Port Seal	Ethylene Propylene			
4	2	Spiral Ring	316 SST	47336	47336	47336
5	2	Port Nut	Engineering Thermoplastic	45066	45066	45066
6	2	Bearing Plate	6061-T6 Aluminium Alloy – Hard anodized	96156	96157	96157
7	2	Head Seal	Ethylene Propylene – O – Ring	96000	96000	96000
8	2	Sealing Plate	Engineering Thermoplastic	96159	96159	96159
9	2	Spacer	Engineering Thermoplastic	96262	96262	96262
10	2	Permeate Port Seal	Ethylene Propylene – O – Ring	45312	45312	45312
11	2	Permeate Port	Engineering Thermoplastic	96263	96263	96263
12	1	Thrust Cone	Engineering Thermoplastic	96163	96163	96163
13	2	Adapter Seal	Ethylene Propylene –O – Ring	52245	52245	52245
14	2	Adapter	Engineering Thermoplastic	A/R	A/R	A/R
15	4	PWT Seal	Ethylene Propylene – O – Ring	A/R	A/R	A/R
16*	3**	Strap Assy.	304 Stainless Steel – PVC Cushion	45042	45042	45042
17*	3**	Universal Saddle	Engineering Thermoplastic	52169	52169	52169
18*	6	Strap Screw	5/ 16-18 UNC, 18-8 Stainless Steel	46265	46265	46265
# Grade CF3M per ASME SA-351/316L as per SA-479.						
* Not shown in above cross section view. ** 2 each furnished with length code 1, 2 & 3.						

