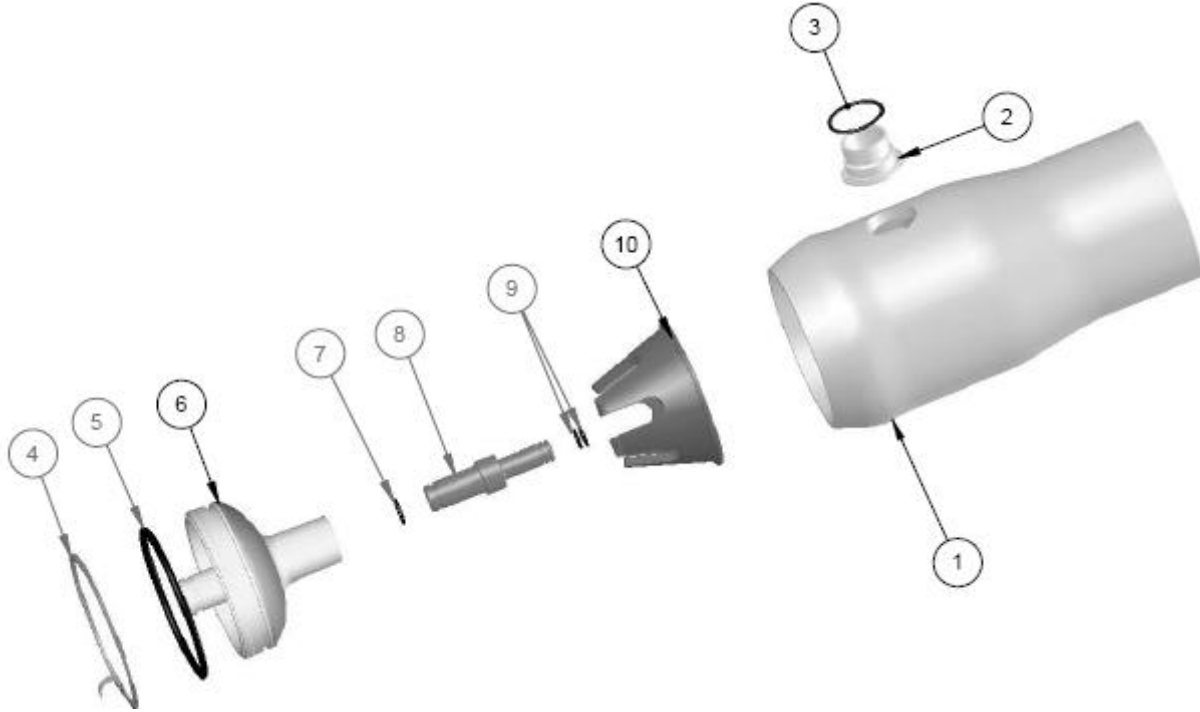


COMPONENT IDENTIFICATION

80S15, 80S30, 80S45, 80S60 – Non-Coded



DWG REF	QTY	DESCRIPTION	MATERIAL	80S15/30	80S45/60
				PART NUMBER	PART NUMBER
1	1	SHELL	Filament Wound Epoxy/Glass composites – Head Locking grooves integrally wound in place.	ORDER SECTION	ORDER SECTION
2	A/R	F/C Port	CF3M#		
3	A/R	F/C Port Seal	Ethylene Propylene		
4	2	Spiral Ring	316 SST	47336	47336
5	2	Head Seal	Ethylene Propylene – O – Ring	96000	96000
6	2	Elliptical Head	Engineering Thermoplastic	96247 96243	96248 96244
7	2	Adapter Seal	Ethylene Propylene –O – Ring	52245	52245
8	2	Adapter	Engineering Thermoplastic	A/R	A/R
9	4	PWT Seal	Ethylene Propylene – O – Ring	A/R	A/R
10	1	Thrust Cone	Engineering Thermoplastic	97014	97014
11*	3**	Strap Assy.	304 Stainless Steel – PVC Cushion	45042	45042
12*	3**	Universal Saddle	Engineering Thermoplastic	52169	52169
13*	6	Strap Screw	5/ 16-18 UNC, 18-8 Stainless Steel	46265	46265
#Grade CF3M per ASME SA-351 / 316L as per SA-479					
* Not shown in above cross section view. ** 2 each furnished with length code 1, 2 & 3.					

