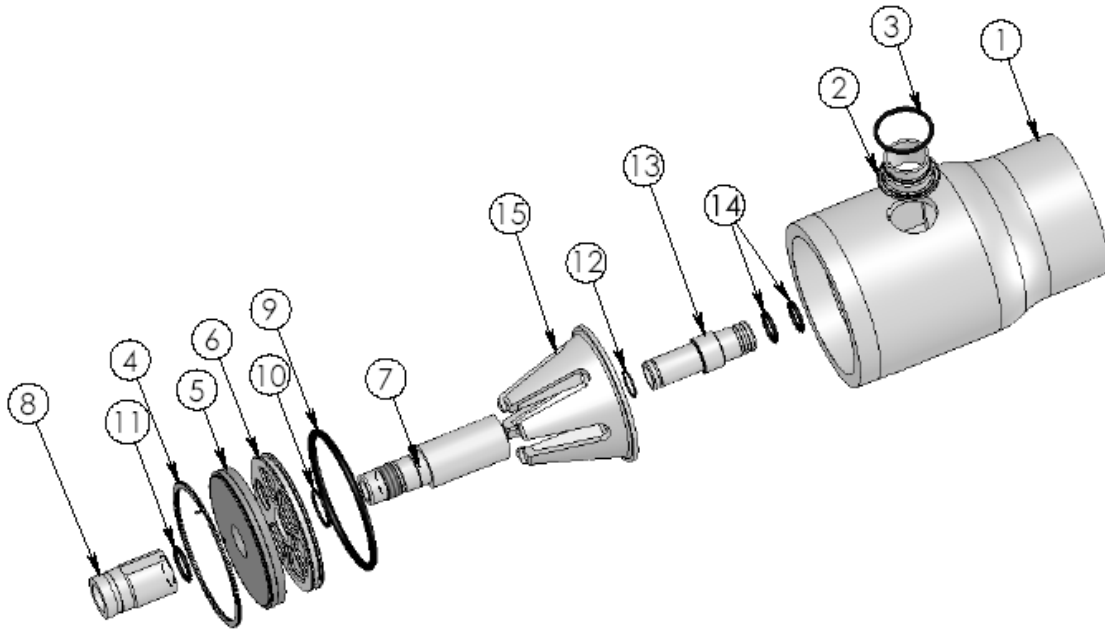


COMPONENT IDENTIFICATION

80S05 - Coded

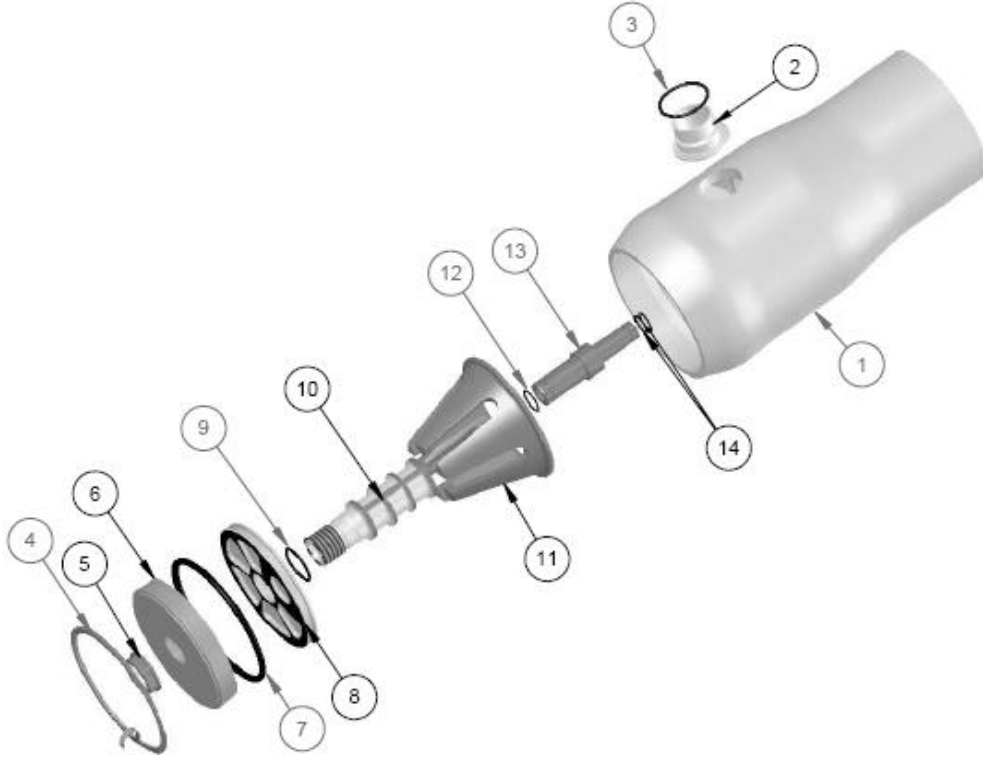


DWG REF	QTY	DESCRIPTION	MATERIAL	80S05
				PART NUMBER
1	1	SHELL	Filament Wound Epoxy/Glass composites – Head Locking grooves integrally wound in place.	ORDER SECTION
2	4	F/C Port	CF3M [#]	98025
3	4	F/C Port Seal	Ethylene Propylene	96078
4	2	Spiral Ring	316 SST	47336
5	2	Bearing Plate	6061-T6 Aluminum Alloy – Hard anodized	96156
6	2	Sealing Plate	Engineering Thermoplastic	96160
7	2	Permeate Port	Engineering Thermoplastic	96435
8	2	Port Nut 2" Vic.	Engineering Thermoplastic	50980
9	2	Head Seal	Ethylene Propylene – O – Ring	96000
10	2	Perm Port Seal	Ethylene Propylene – O – Ring	45312
11	2	Port Nut Seal	Ethylene Propylene – O – Ring	45311
12	2	Adapter Seal	Ethylene Propylene – O – Ring	52245
13	2	Adapter	Engineering Thermoplastic	A/R
14	4	PWT Seal	Ethylene Propylene – O – Ring	A/R
15	1	Thrust Cone	Engineering Thermoplastic	96163
16*	3**	Strap Assy.	304 Stainless Steel – PVC Cushion	45042
17*	3**	Universal Saddle	Engineering Thermoplastic	52169
18*	6	Strap Screw	5/ 16-18 UNC, 18-8 Stainless Steel	46265
#Grade CF3M per ASME SA-351 / 316L as per SA-479				
* Not shown in above cross section view. ** 2 each furnished with length code 1, 2 & 3.				



COMPONENT IDENTIFICATION

80S15, 80S30, 80S45, 80S60, 80S100, 80S120 - Coded



DWG REF	QTY	DESCRIPTION	MATERIAL	80S15/30	80S45/60	80S100/120
				PART NUMBER	PART NUMBER	PART NUMBER
1	1	SHELL	Filament Wound Epoxy/Glass composites – Head Locking grooves integrally wound in place.	ORDER SECTION	ORDER SECTION	ORDER SECTION
2	A/R	F/C Port	80S15 / 30 / 45 / 60: CF3M#			
			80S100 / 120: CD3MWCuN##			
3	A/R	F/C Port Seal	Ethylene Propylene			
4	2	Spiral Ring	316 SST	47336	47336	47336
5	2	Port Nut	Engineering Thermoplastic	45066	45066	45066
6	2	Bearing Plate	6061-T6 Aluminum Alloy – Hard anodized	96156	96157	96158
7	2	Head Seal	Ethylene Propylene – O – Ring	96000	96000	96000
8	2	Sealing Plate	Engineering Thermoplastic	96160	96160	96160
9	2	Perm Port Seal	Ethylene Propylene – O – Ring	45312	45312	45312
10	2	Permeate Port	Engineering Thermoplastic	96162	96162	96162
11	1	Thrust Cone	Engineering Thermoplastic	96163	96163	96163
12	2	Adapter Seal	Ethylene Propylene – O – Ring	52245	52245	52245
13	2	Adapter	Engineering Thermoplastic	A/R	A/R	A/R
14	4	PWT Seal	Ethylene Propylene – O – Ring	A/R	A/R	A/R
15*	3**	Strap Assy.	304 Stainless Steel – PVC Cushion	45042	45042	45042
16*	3**	Universal Saddle	Engineering Thermoplastic	52169	52169	52169
17*	6	Strap Screw	5/ 16-18 UNC, 18-8 Stainless Steel	46265	46265	46265
#Grade CF3M per ASME SA-351 / 316L as per SA-479. ## Grade CD3MWCuN as per ASME SA-995 (J93380)						
* Not shown in above cross section view. ** 2 each furnished with length code 1, 2 & 3.						

