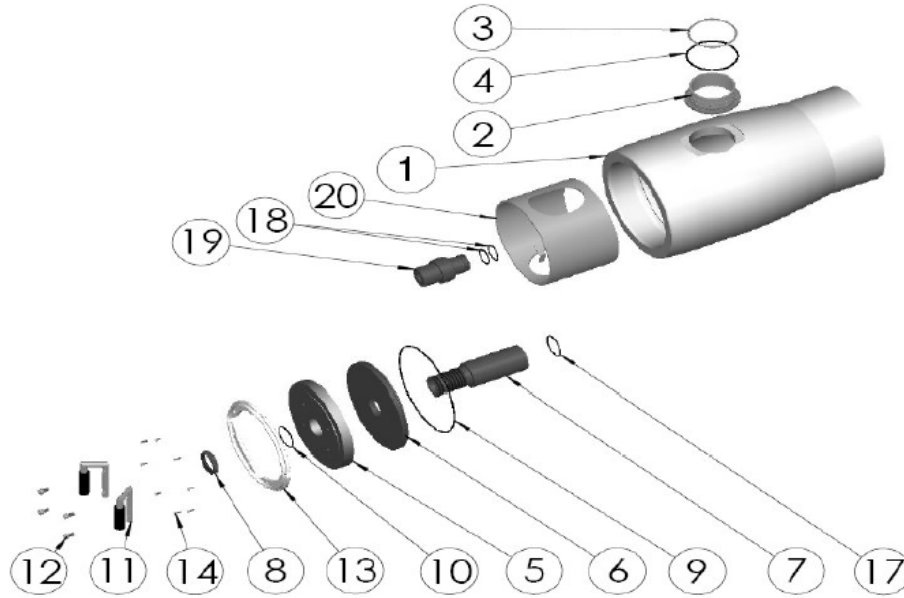


COMPONENT IDENTIFICATION

160S30



DWG REF	QTY	DESCRIPTION	MATERIAL	160S30
				PART NUMBER
1	1	SHELL	Filament Wound Epoxy/Glass composites – Head Locking grooves integrally in place.	ORDER SECTION
2	A/R	Feed/Concentrate Port 6"	CF3M for Brackish Water / CD3MWCuN for Sea Water	
3	A/R	Port Retainer Ring 6"	SS 316 or Cast Equivalent	
4	A/R	Feed/Conc. Port Seal 6"	Ethylene Propylene – O – Ring	
5	2	Bearing Plate	6061-T6 Aluminium Alloy – Hard Anodized	96309
6	2	Sealing Plate	Engineering Thermoplastic	96311
7	2	Permeate Port	Engineering Thermoplastic	96312
8	2	Port Nut	Engineering Thermoplastic	96220
9	2	Head Seal	Ethylene Propylene – O – Ring	96224
10	2	Perm Port Seal	Ethylene Propylene – O – Ring	96223
11	2	Lifting Handle (Set of LH and RH)	SS 316	96215
12	8	M14 Allen Head Screw	SS 316	96403
13	8	Locking Segments	SS 316 or Cast Equivalent	96219
14	16	Allen Head Screw	SS 316	96387
15*	3**	Saddle	Engineering Thermoplastic	96216
16*	3**	Strap Assy.	304/316 SS – PVC Cushion	94193
17	2	Adaptor Seal	Ethylene Propylene – O – Ring	96223
18	4	PWT Seal	Ethylene Propylene – O – Ring	96204
19	-	Adaptor for 40.5" DOW Membranes ***	No Adaptors will be supplied by Pentair for 40.5" DOW Membranes	-
	2	Adaptor for 40" Membranes	Engineering Thermoplastic	A/R
20	1	Thrust Ring	Engineering Thermoplastic	96316
* Not shown in the above cross section				
** 2 Each furnished with length codes 1, 2 & 3				
*** For 40.5" DOW Membranes – Use Permeate Port 96967 for 160S30 and 96969 for 160S120 & Thrust Ring 96968				

