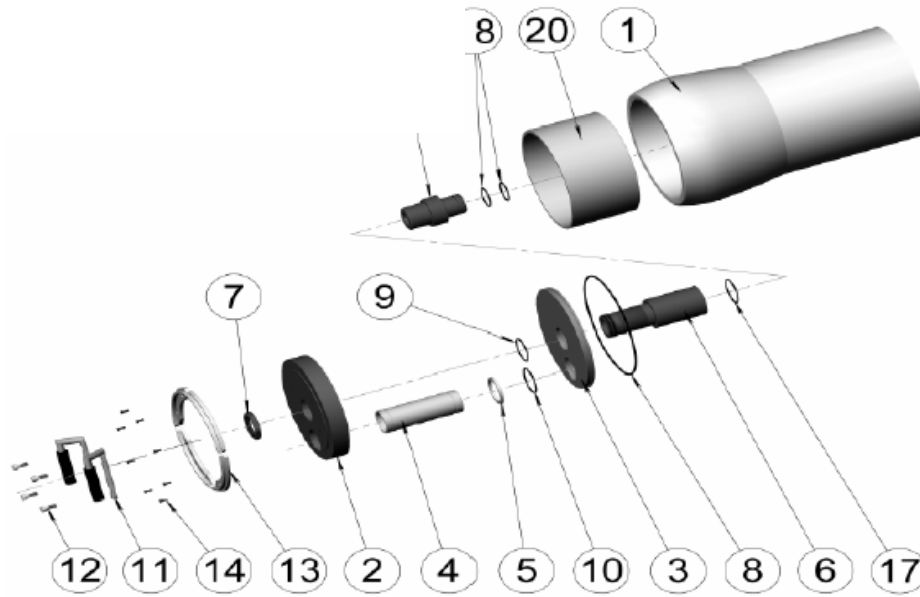


COMPONENT IDENTIFICATION

160E30 & 160E120



DWG REF	QTY	DESCRIPTION	MATERIAL	160E30	160E120
				PART NUMBER	PART NUMBER
1	1	SHELL	Filament Wound Epoxy/Glass composites – Head Locking grooves integrally wound in place.	ORDER SECTION	ORDER SECTION
2	2	Bearing Plate	6061-T6 Aluminum Alloy – Hard anodized	96198	96210
3	2	Sealing Plate	Engineering Thermoplastic	96225	96225
4	2	Feed/Concentrate Port	160E30: SS 316L 160E120: Zeron 100	96199	96211
5	2	Port Retainer Set	SS 316L or Cast Equivalent	96217	96217
6	2	Permeate Port	Engineering Thermoplastic	96200	96212
7	2	Port Nut	Engineering Thermoplastic	96220	96220
8	2	Head Seal	Ethylene Propylene – O – Ring	96224	96224
9	2	Perm Port Seal	Ethylene Propylene – O – Ring	96223	96223
10	2	Feed/Concentrate Port Seal	Ethylene Propylene – O – Ring	96223	96223
11	2	Lifting Handle (Set of LH and RH)	SS 316	96215	96215
12	8	M14 Allen Head Screw	SS 316	96403	96403
13	8	Locking Segments	SS 316 or Cast Equivalent	96219	96209
14	16	Allen Head Screw	SS 316	96387	96387
15*	3**	Saddle	Engineering Thermoplastic	96216	96216
16*	3**	Strap Assy.	304/316 SSI – PVC Cushion	94193	94187
17	2	Adaptor Seal	Ethylene Propylene – O – Ring	96223	96223
18	4	PWT Seal	Ethylene Propylene – O – Ring	A/R	A/R
19	-	Adaptor for 40.5" DOW Membranes ***	No Adaptors will be supplied by Pentair for 40.5" DOW Membranes	-	-
	2	Adaptor for 40" Membranes	Engineering Thermoplastic	A/R	A/R
20	1	Thrust Ring	Engineering Thermoplastic	96221	96228

* Not shown in the above cross section

** 2 Each furnished with length codes 1, 2 & 3

*** For 40.5" DOW Membranes – For 160E30 use Permeate Port 96966 & Thrust Ring 96965 and for 160E120 use Permeate Port 96956 & Thrust Ring 96957.

